



Danish Ministry of the Environment
National Survey and Cadastre

FME Server

Peter Laulund

Abstract

At the National Survey (KMS) we have been using Spatial Direct and FMEServer for almost ten years. Today we are running five different FME applications where users via a web interface can extract data from our databases and download the result. In my presentation I will demonstrate some of these applications and discuss the architecture of the system I will also discuss our plans for the future in relation to updating the system, INSPIRE and e-trade.



National Survey and Cadastre – Denmark, KMS

Part of Ministry of the Environment

280 employees

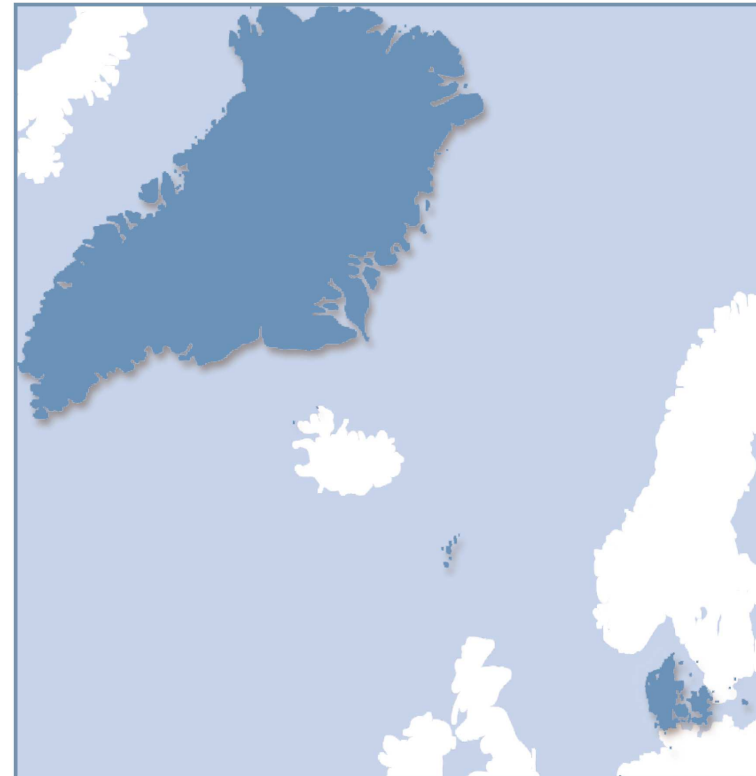
Geodetic network

Cadastre

Topographic mapping

Nautical charting

INSPIRE



At the last conference I gave a lecture about the scripts we have developed at KMS, today I will give a talk about how we use these scripts in combination with FMEServer

We have been using FMEServer and SpatialDirect since 2004 and are using it for

- Ad hoc extraction and download of our dataset – [KF-Download](#)
- Cadastral data for private surveyors – [MIA distribution](#)
- Ad hoc extraction of topographical data to the municipalities as GML 2 and GML 3
- Daily batch extraction of data, for download via our ftp server



KMS Datadistribution

[Login](#)[Bestillingsformular](#)[Mine data](#)[Bestillingslog](#)[Hjælp](#)

Vælg udtrækstype:

Adm. kode**Boundingbox**

Adm. område id:

Flere adm. koder udtrækkes
som:

- Ét fælles område
 Separate områder

Buffer:

Vælg data, format og projektion:

Datasæt:

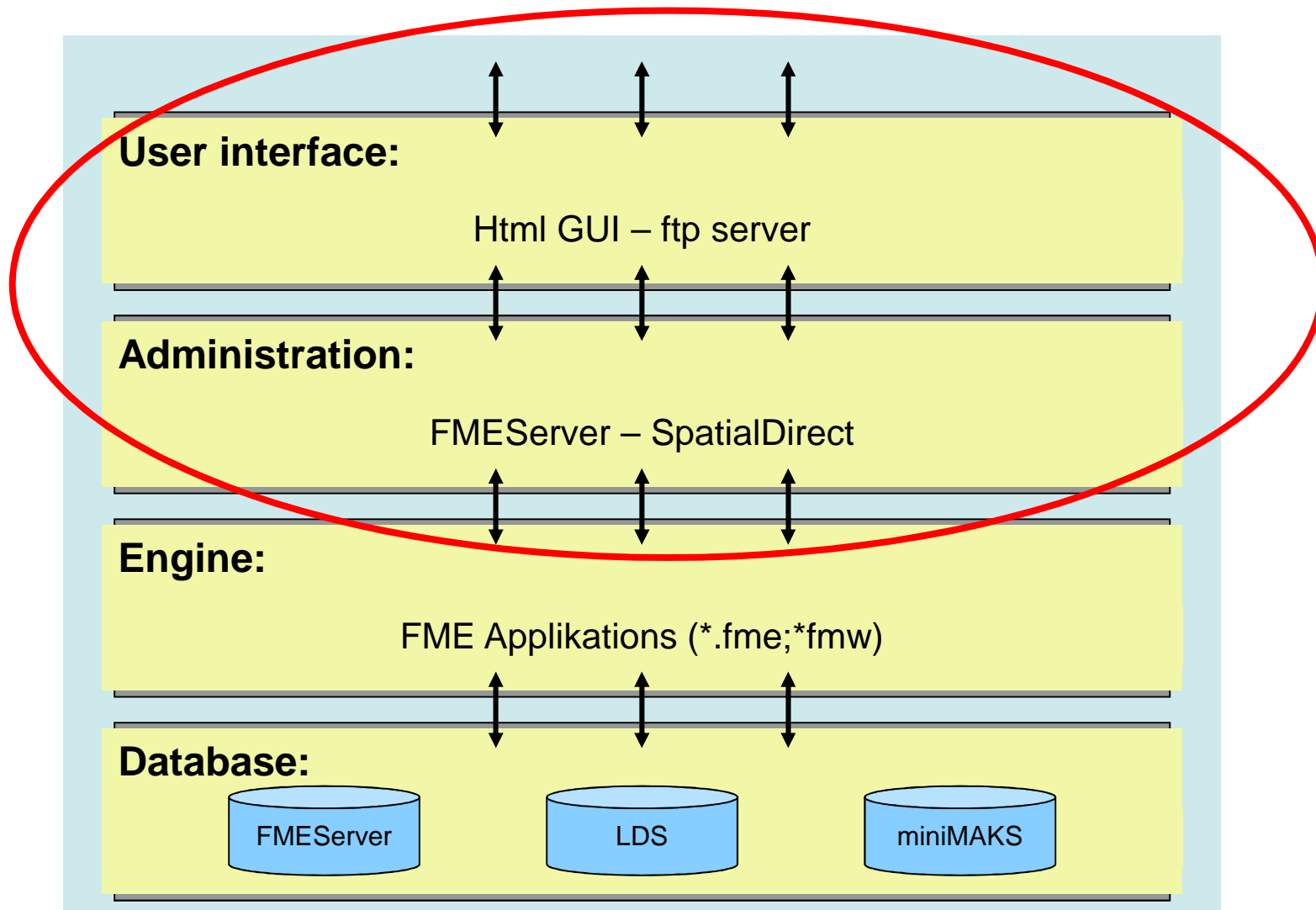
KORT10 MATRIKEL ADRESSER

Data Format:

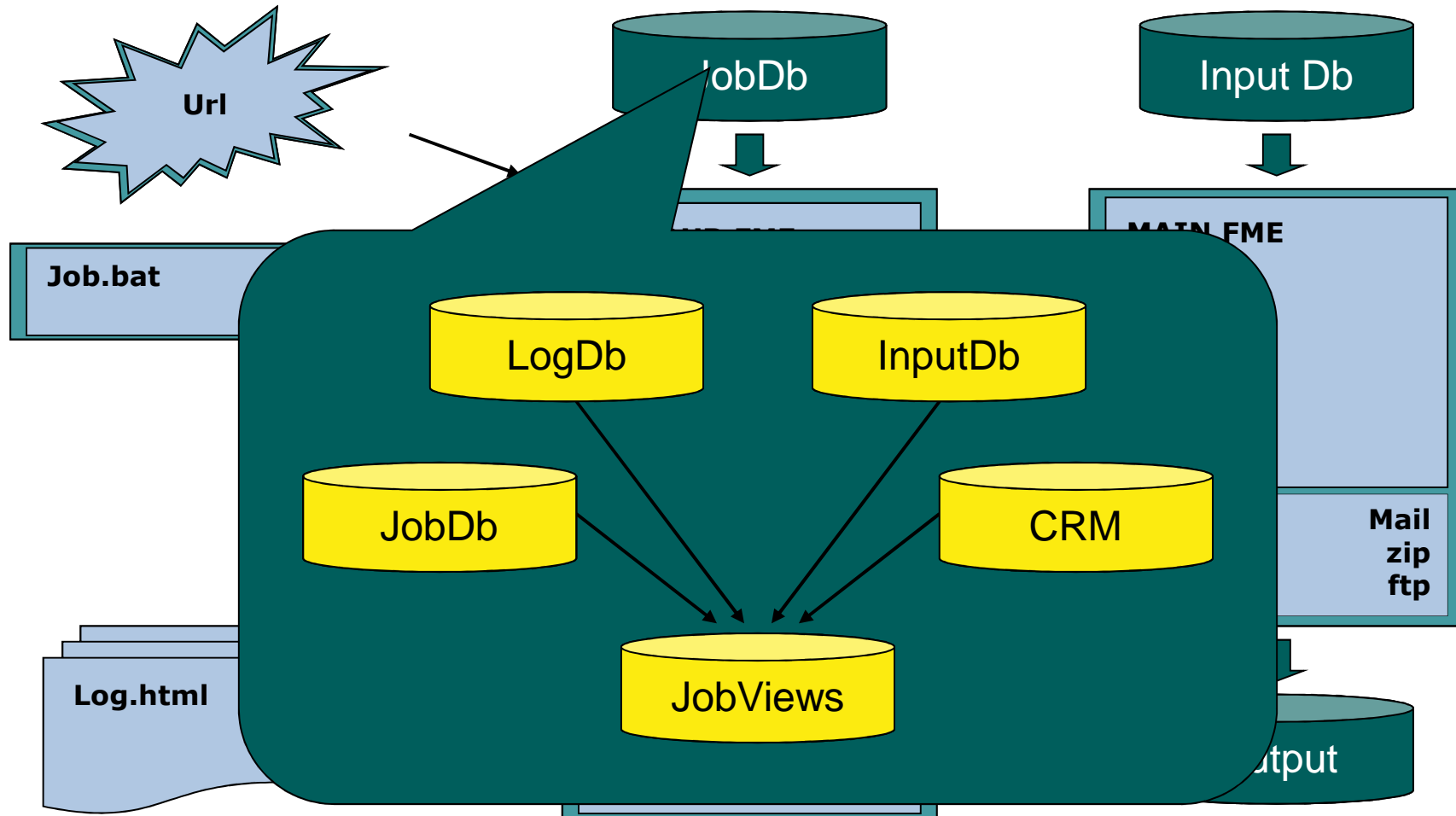


Projektion:

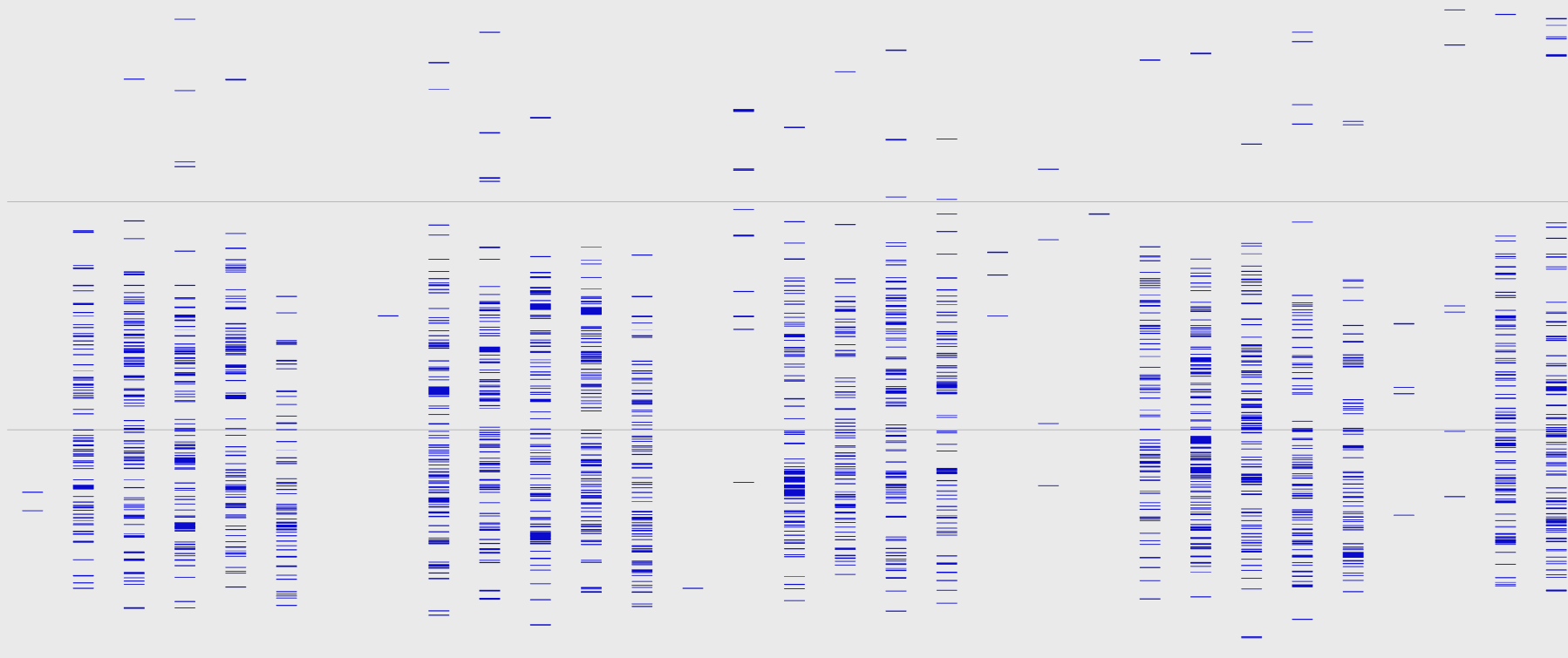




Architecture of batch system



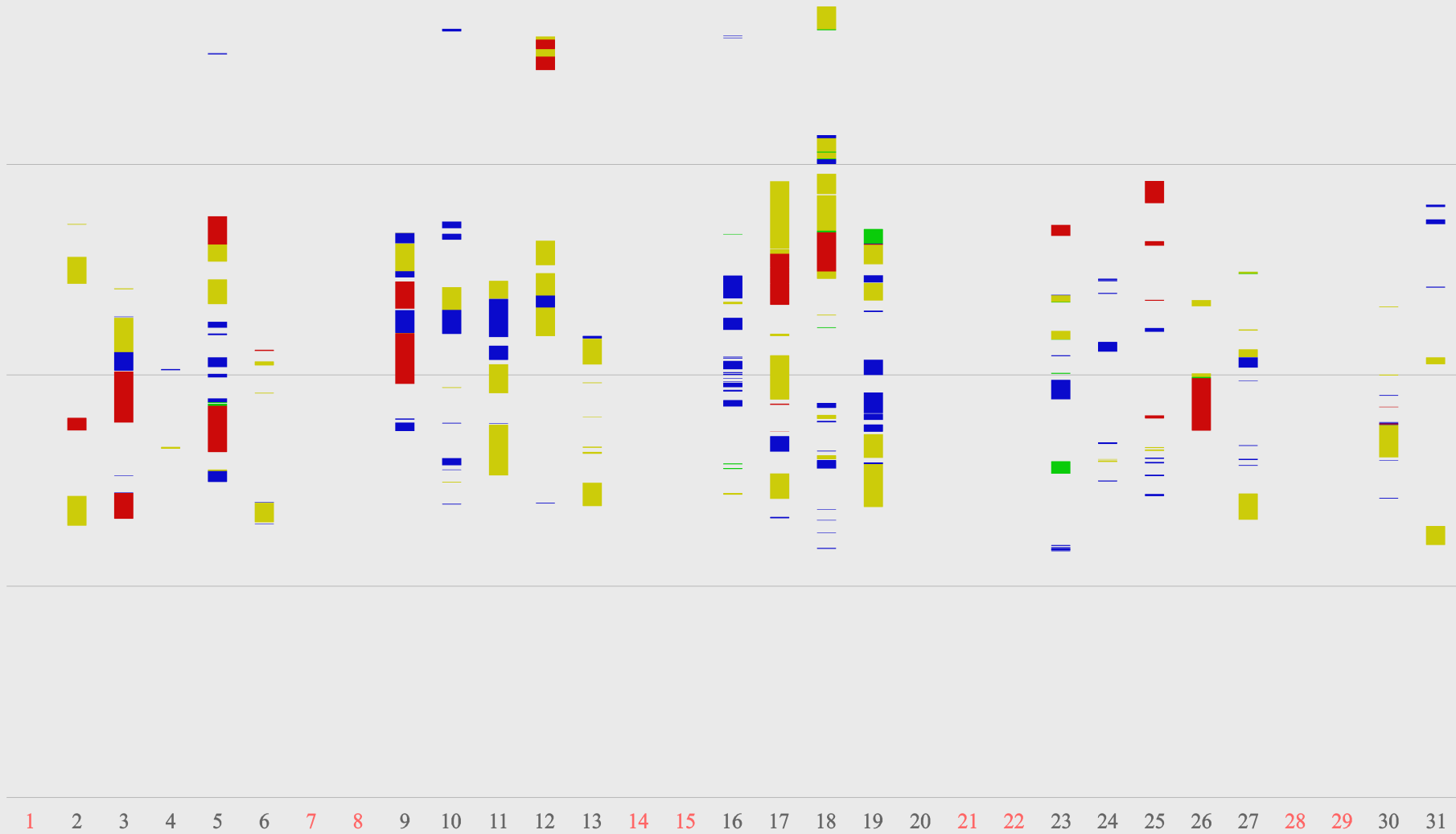
KMSWEBMAT2 - 201105



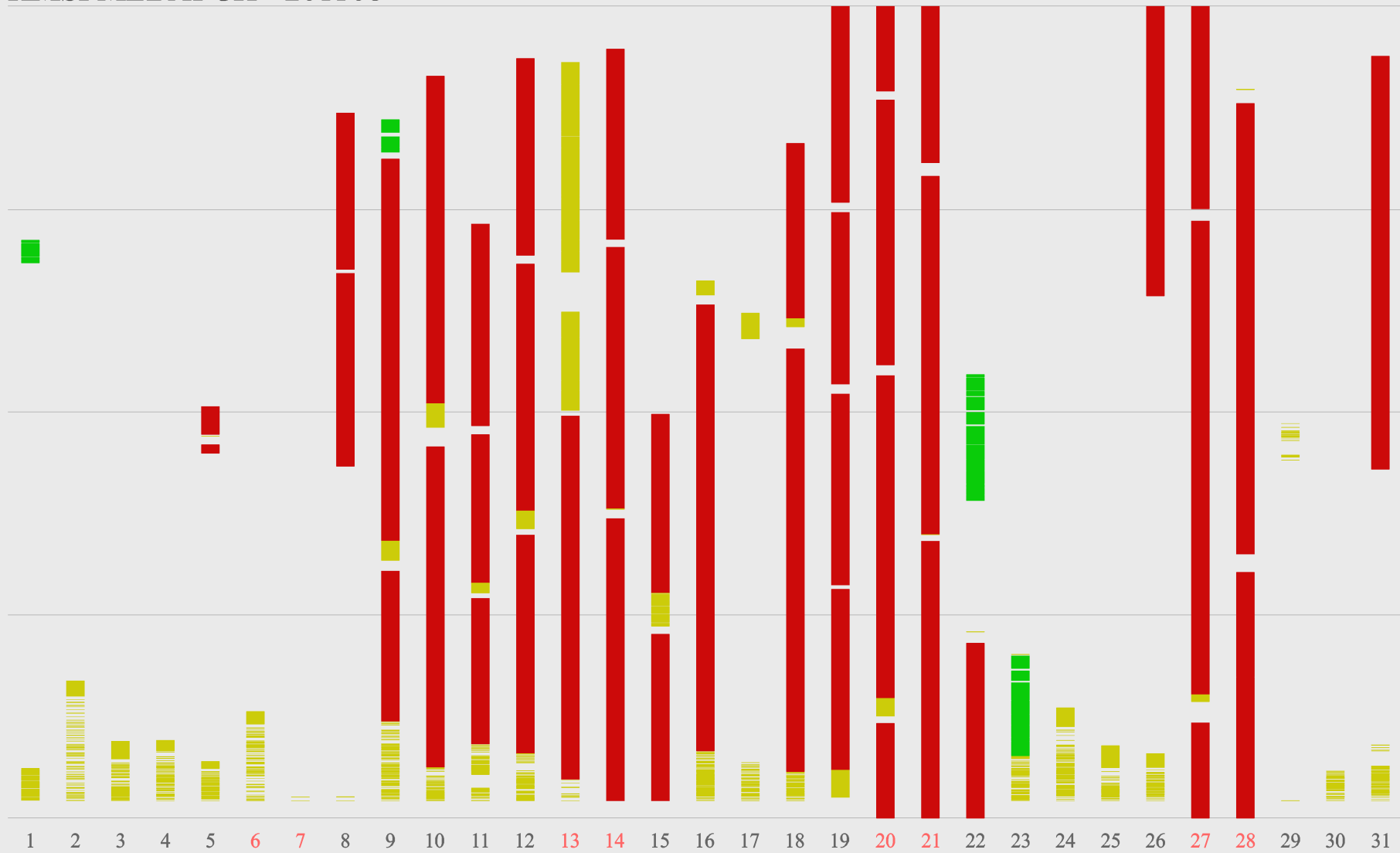
1 2 3 4 5 6 7 8 9 10 11 12 13 14 15 16 17 18 19 20 21 22 23 24 25 26 27 28 29 30 31



KMSDBDIST2 - 201105



KMSFMEBATCH - 201108



Future development

Upgrade the web GUI

Migrate to one version of FMEServer – probably 2012

See the system as one with one common job database and resources'

Better documentation

More datasets and formats - raster, DHM and vector datasets

INSPIRE datasets

E-trade



Ten years ago eight to ten
people worked with data
distribution, now we are just
two distributing 40.000 dataset
pr. year.



Questions?



Danish Ministry of the Environment
National Survey and Cadastre

Peter Laulund
Rentemestervej 8
DK-2400 Copenhagen NV
Denmark
Phone: +45 72 54 51 73
E-mail: pelau@kms.dk